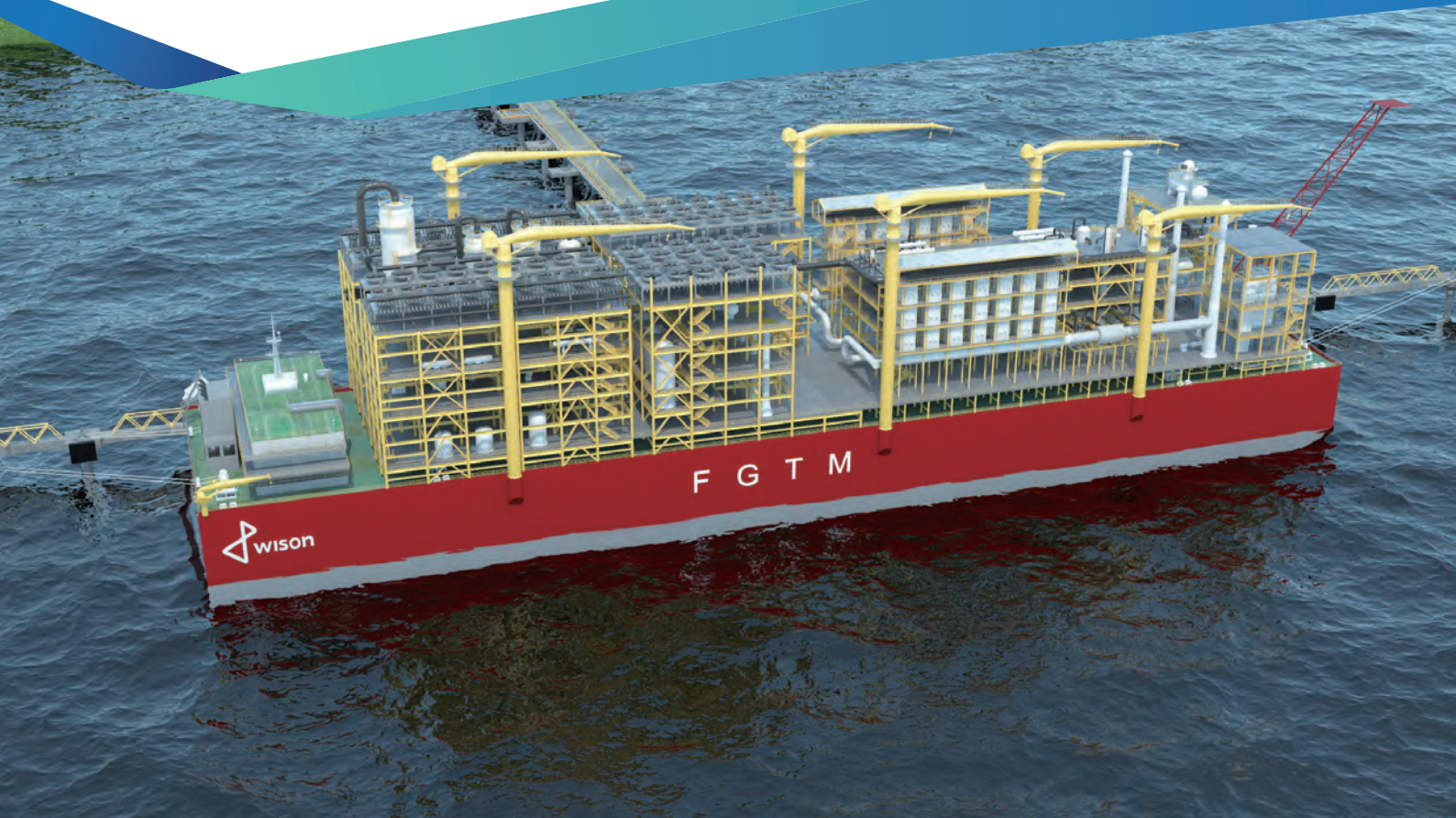


Natural Gas to Methanol

FGTM



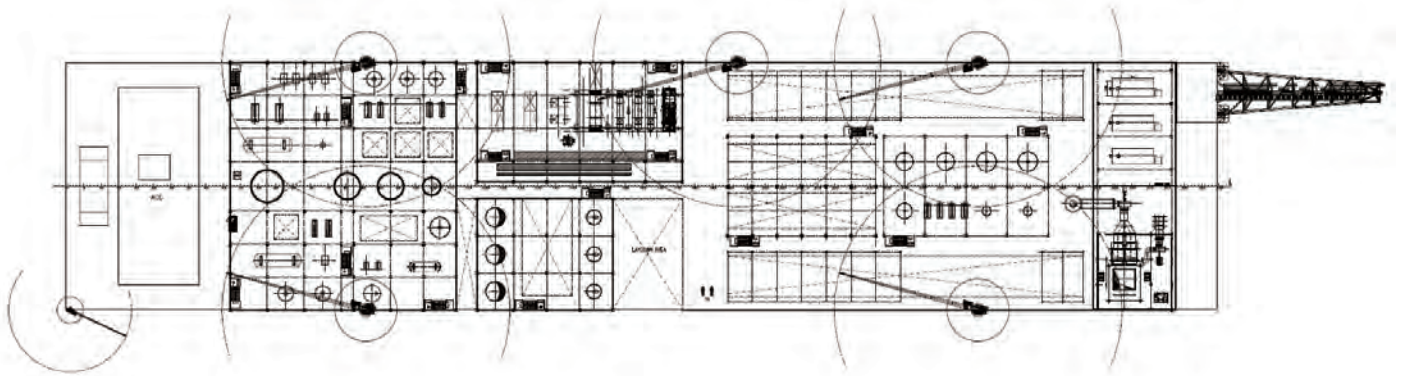
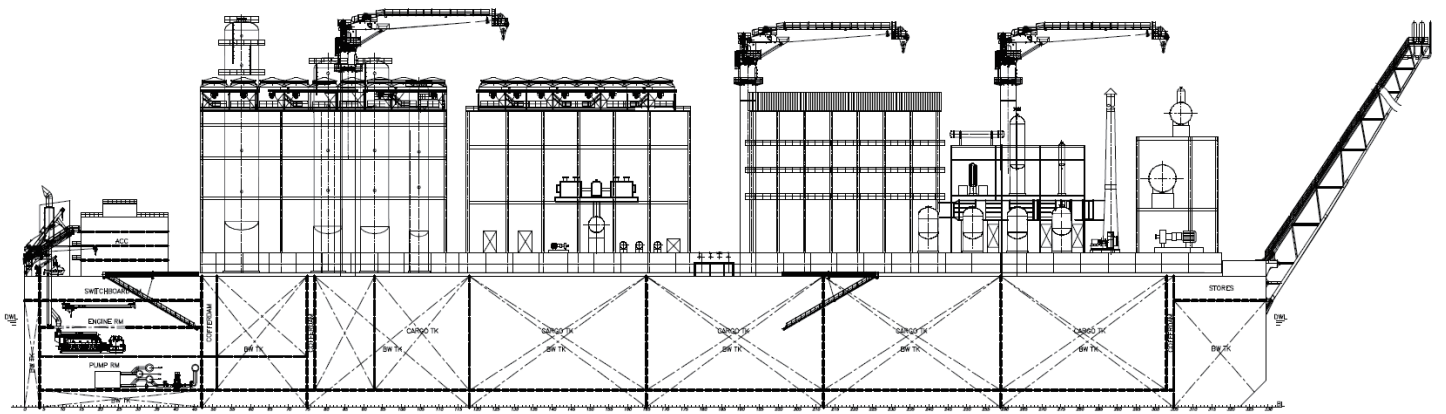
Innovative floating natural gas to methanol nearshore barge

Key Features

- Cost competitive
- Rapid deployment solution
- Minimal onshore permitting
- Easily redeployable
- Efficient and compact design
- Benign offshore deployment



Approval in Principal
Certificate Number:T1807775



Topside Parameters

- Methanol Production 5,400 TPD
- Purity $\geq 99.85\%$
- Design Life 20 years
- Operational Flexibility 60%~110%
- Footprint 220 x 60m

Hull Dimensions

- Length 280.00 m
- Breadth 60.00 m
- Depth 29.50 m
- Design Draft 19.50 m
- Storage Capacity 206,000 m³

Classification

- ABS
+A1, HL(25), FL(30), 20xx, +AMCCU, UWILD, RRDA, IHM, CPS, OHCM