

# LNG Distributor

LNGD



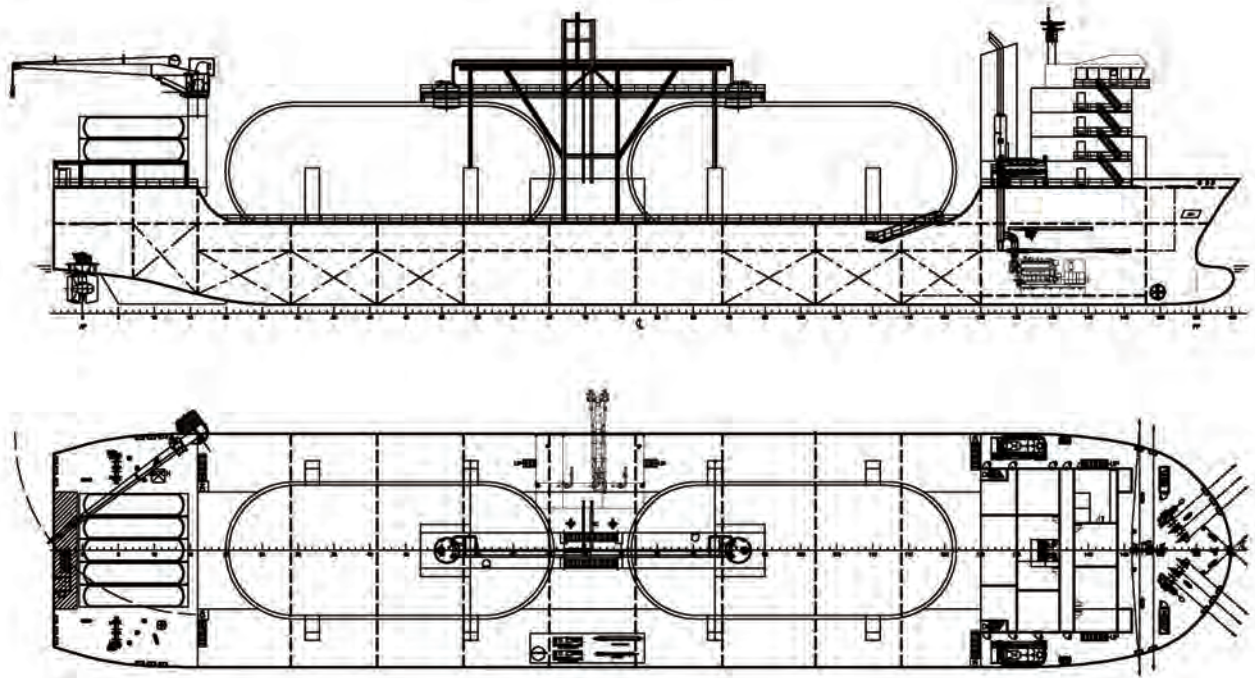
**Versatile LNG distribution vessel, designed to deliver small LNG parcels to multiple locations affordably.**

## Key Features

- Partial cargo delivery
- Superior maneuverability
- ISO tank distribution
- Quick terminal turnaround
- Shallow draft



Approval in Principal  
Ref:M-SA-CL/PSPILL/P25114-J-23



### Main Dimensions

• Length overall	124.00m
• Breadth	26.00m
• Depth at side	9.00m
• Design draught	4.50m

### Performance

• Service speed	12 knots
-----------------	----------

### Capacities

• LNG	10,000m <sup>3</sup>
• MDO	600m <sup>3</sup>
• Ballast water	4,400m <sup>3</sup>

### Cargo Transfer

• Loading rate	2,000m <sup>3</sup> /h
• Unloading rate	1,000m <sup>3</sup> /h

### Accommodation

• Complement	21 persons
--------------	------------

### Machinery / Propulsion

• Generators	3 x 2,400 kW - dual fuel (IMO tier III in gas mode)
• Emergency generator	1 x 200 kW - diesel
• Stern thrusters	2 x 2,000 kW azimuth
• Bow thruster	1 x 650 kW

### Cargo Equipment

• Cargo pumps	2 x 500m <sup>3</sup> /h per tank
• BOG handling equipment	2 x BOG compressor & 1 x heater
• Fuel gas system	1 x Forced vaporiser set
• Manifolds	1 x Loading / Unloading + 1 Vapor return
• LNG transfer system	1 x 8" liquid + 1 x 6" vapor return with QCQD & ER system
• ISO container handling	LNG ISO tank refilling and transfer

### Navigation & Automation

- Fully equipped modern design navigation system
- Centralised, computerised alarm and monitoring system

### Classification

- DNVGL  
+1A1 Tanker for Liquefied Gas, Ship type 2G (-163°C, 0.50 t/m<sup>3</sup>, 4.0 bar), GF, EO, NAUT-AW, R2, BIS, BWM, TMON, Recyclable